

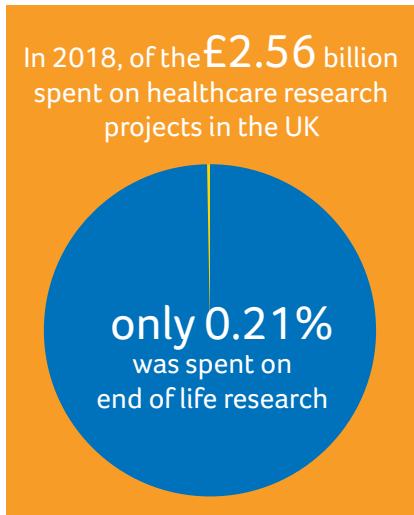
# Marie Curie Research Activities and Impact 2018/19



The UK's population is ageing – in the next 25 years the number of people aged 85 and over is projected to almost double. This means research into improving care for people with terminal illnesses, their families, friend, carers and communities is essential.

Marie Curie remains the UK's largest charitable funder of palliative and end of life care research, with more than £1 in every £3 spent in this area coming from us. Here are some highlights of how the research we funded made a difference in 2018/19.

Care and support through terminal illness



Marie Curie funded research aims to improve care and support for all people affected by terminal illness now and in the future. People are at the heart of what we do, and we give everyone with a terminal illness, as well as carers, palliative care staff and members of the public, the opportunity to take part in research studies.

**3,658** people took part in research studies funded by Marie Curie, or carried out by our researchers

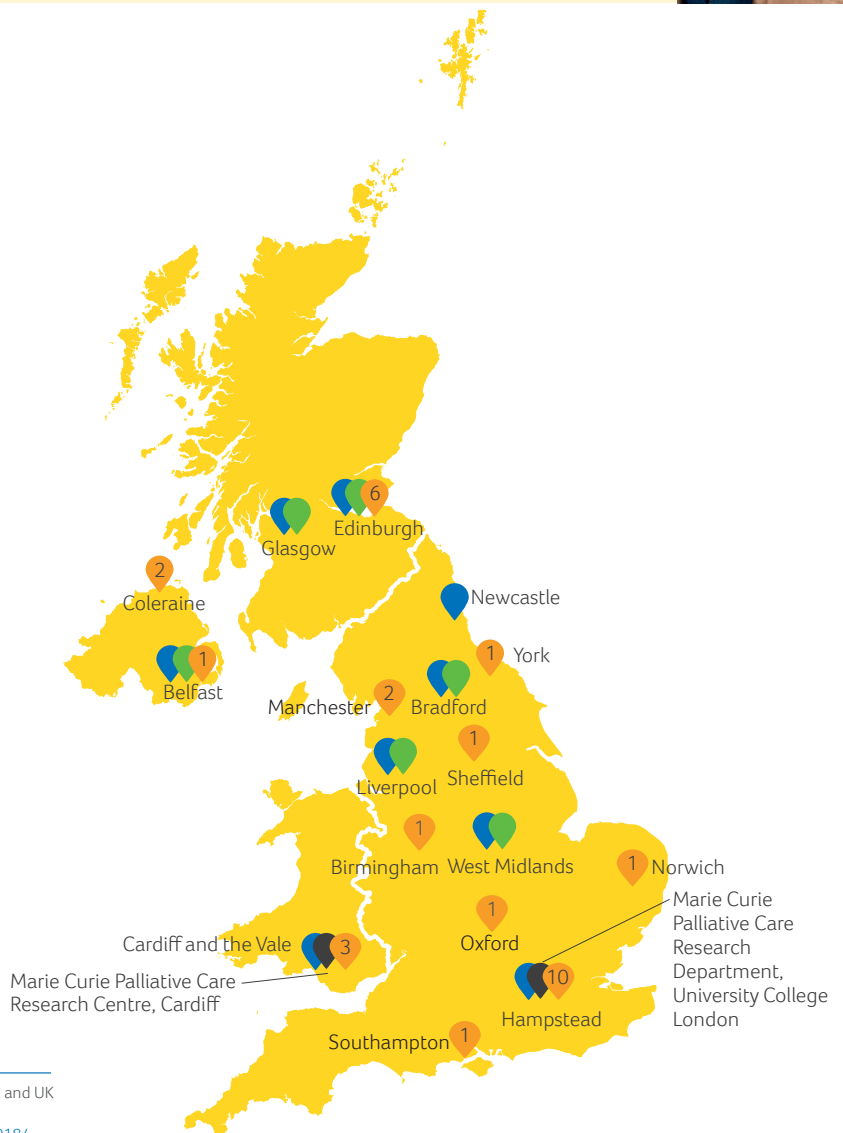
This figure is made up of:  
**1,464** members of the public  
**1,075** patients  
**837** staff and **282** carers



## Active research projects in the UK

Marie Curie funds research across the UK. We have two Research Centres: the Marie Curie Palliative Care Research Department at University College London and the Marie Curie Palliative Care Research Centre at Cardiff University.

We currently have active Research Leads and Fellows facilitating research at six of our hospices, and a further 30 active projects from our various funding schemes.



Sources: Extracted From Marie Curie's manual reports and Researchfish platform and UK Health Research Analysis 2018 (UK Clinical Research Collaboration, 2020) <https://hrcsonline.net/reports/analysis-reports/uk-health-research-analysis-2018/>

# Influencing policy and practice

In 2018, Marie Curie research made an impact on policy and practice on 20 separate occasions. Examples of this include the development of a new online toolkit that assists hostel workers to gain access to palliative care services for homeless people, and directly affecting guidelines for the management of people with dementia in relation to the use of tube feeding. To read more about these, and other ways in which our research has impacted on policy and practice, please see the accompanying case studies.

20 instances of informing policy and practice



## Additional funding for research

Marie Curie funds research through a variety of means, including our Research Centres, Research Leads and Fellows, and the Marie Curie Research Grants Scheme.

The funding that we provide offers recipients the opportunity to build on their research by accessing funding from other organisations.

In 2018, Marie Curie funded researchers gained a further **£6.6 million** in additional funding to help build on and expand their research.

The highlight is a

**£4.7million grant**

from a Government Dementia Research Initiative grant, in partnership with the Economic and Social Research Council and National Institute for Health Research to support the Marie Curie Palliative Care Research Department's Empowering Better End of Life Dementia Care Programme (EMBED-Care) at University College London

## Publishing more papers

Marie Curie funded researchers had papers published in a peer reviewed journal a record 98 times in 2018. 73% of these papers are freely available for anyone to access, download and read without needing to pay for a journal subscription.



**For more information contact**  
[research.info@mariecurie.org.uk](mailto:research.info@mariecurie.org.uk)

Charity reg no. 207994 (England & Wales), SC038731 (Scotland) E411c